

## RalB

**Catalog Number:** 26018

**Gene Symbol:** RALB

**Description:** Anti-RalB Mouse Monoclonal Antibody

**Background:** The Ras-like small G proteins, RalA/B, are important components of Ras signaling pathways, implicated in the initiation and maintenance of tumorigenic transformation, as well as vesicle transport, apoptosis, transcription, cell migration, and cell proliferation.

**Immunogen:** Recombinant full length protein of RalB

**Tested applications:** ELISA, WB, IP, IHC

**Recommended dilutions:**

ELISA: 1:1000-1:5000

WB: 1:100-1:2000

IP: 1 µg for 1~2 mg total cellular proteins

IHC: 1:100 dilution

**Concentration:** 1 mg/ml

**Host:** mouse

**Clonality:** Monoclonal

**Isotype:** IgG

**Purity:** Purified from ascites

**Format:** Liquid

**Storage buffer:**

Preservative: no

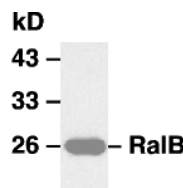
Constituents: PBS (without Mg<sup>2+</sup> and Ca<sup>2+</sup>), pH

7.4, 150 mM NaCl, 50% glycerol

**Species Reactivity:** Anti-RalB antibody recognizes RalB of vertebrates.

**Storage Conditions:** Store at -20°C. Avoid freeze / thaw cycles

### Western blot:



**WB: anti-RalB mAb**

Western blot analysis of RalB proteins. EC-1 cell lysate was used for Western blot with anti-RalB monoclonal antibody (cat # 26018).